

NICHOLSON ELEMENTARY SCHOOL

CURRICULUM, ACTIVITIES

Operating on a K-6-6 formula, the district stresses progressive education on all levels. Development of ungraded group instruction on the elementary level is now under way on a limited basis and will be expanded in the future.

The high school offers a wide range of studies. The academic major program provides concentrations in liberal arts and science. The vocational major program embraces concentrations in business, industrial arts and home economics.

An active Student Council and a variety of clubs in many fields work effectively to provide cultural events, dramatic

presentations and general assembly programs. They also help to sponsor such social events as dances, rallies and dinners.

The district's athletics program includes junior high basketball and football. On the high school level it embraces football, cross country, basketball, wrestling, volleyball, track and baseball for boys and basketball and field hockey for girls.

Trail's sports teams, known as the "Lions," have compiled outstanding records, especially in football, basketball and wrestling, and have won many championships in league, conference and PIAA district competition.



Lackawanna Trail School District's Educational Philosophy

"We believe the primary purpose of education in the Lackawanna Trail Schools is to inform the mind and develop the intelligence as a means in assisting in the survival of our free society. We feel that we should underwrite in our schools the defense of peace and freedom in our democratic society. Through our schools we should teach democratic citizenship and emphasize the skills necessary for our students to become productive members of our society.

"Our goal is fluid and flexible because as society alters its demands, our approach and implementation must be adjusted accordingly. Our key lies in planned and regular periodic re-evaluation of our progress in order to secure continued realization of our purposes and objectives."

Administrative Staff

- P. R. Bartholme, Superintendent
- W. D. Tyler, Administrative Assistant
- W. O. Fahringer, Elementary Principal
- John Tuthill, Secondary Principal
- Roy Davis, Ass't. Secondary Principal



Lackawanna Trail School District



Junior-Senior High School at Tunnel Hill

LACKAWANNA TRAIL SCHOOL DISTRICT

Administrative Offices
College Avenue
Factoryville, Pa. 18419

AREA MAKEUP, ACCREDITATION

Lackawanna Trail School District comprises eight civil subdivisions with a total land area of approximately 72 square miles and a population of about 6,600 persons.

The district embraces Dalton Borough and Benton, La Plume and West Abington Townships in Lackawanna County and Factoryville and Nicholson Boroughs and Clinton and Nicholson Townships in Wyoming County.

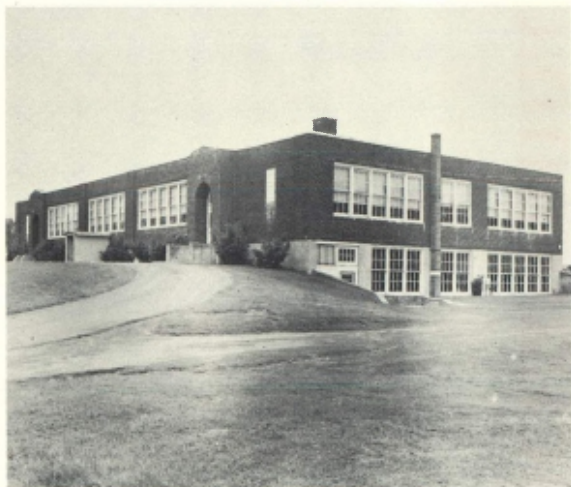
Building facilities include a junior-senior high school at Tunnel Hill, an administrative office building in Factoryville and elementary schools in the communities of Dalton, Factoryville, Fleetville and Nicholson.

The junior-senior high school is fully-accredited by the Middle Atlantic States Association of Colleges and Secondary Schools for the period 1972 to 1982.

In addition, the elementary professional staff, under sponsorship of the state Department of Education, has successfully completed an in-depth self-evaluation which has led to numerous program improvements, more of which will be implemented in the near future.

Lackawanna Trail has a current enrollment of nearly 1,700 pupils and employs more than 100 persons on its administrative and instructional staffs.

The district is now in the process of implementing an extensive building program to provide much needed additional classrooms and other facilities. The first phase of the program involves large additions to the Dalton and Factoryville elementary buildings. The second phase will cover expansion of the junior-senior high school.



BENTON ELEMENTARY SCHOOL



DALTON ELEMENTARY SCHOOL

HISTORIC LOCATION

Located in Northeastern Pennsylvania, 15 miles north of Scranton and 12 miles east of Tunkhannock, the district is mostly rural. Much of the area consists of steep, wooded hillsides with narrow bottom lands along its many streams. Benton Township is a plateau, slightly rolling in contour, with rich farmlands.

The area now embraced by Lackawanna Trail School District was a portion of the region granted by England to both Connecticut and Pennsylvania, after which it remained in the possession of the Indians for some 50 years.

Some of the Indian tribes that settled in or traveled through the region were the Delaware, Iroquois, Oneidas, Senecas and Mohawks. They called the area the "Endless Mountains," and that name is still used to designate the region which has been progressively developed as a tourist attraction and recreation area.

The term "Lackawanna" derives from the Delaware Indian word "Lechauhanne" and signifies "the stream that forks." This refers to the joining of the Lackawanna River and the North Branch of the Susquehanna River. In modern times U.S. Route 11, which passes through the heart of the district, was designated the Lackawanna Trail; from which was derived the name of the school district.

At present the area is involved in a rebuilding and evaluating period with efforts being made to further develop its many assets. The region's streams, lakes and wooded hillsides are a source of natural beauty. With its fine connecting highways and its close proximity to Interstate Route 81 (Penn-Can Highway), the area is ideally located for recreational and industrial facilities.

BUILDING FACILITIES

The district's most modern building, the junior-senior high school, was first occupied in February, 1956. It contains 12 regular classrooms, industrial arts and vocational shops, a home economics suite, two science laboratories, two business education rooms, music and art rooms, an audio-learning laboratory, library, kitchen, cafeteria, a combination gymnasium-auditorium, a medical-dental suite and a number of offices and conference rooms. Two modular classrooms were added in 1971.

At the rear of the building on the 26-acre high school site is an athletic complex which includes football, baseball and practice fields, a quarter-mile track and two hard-surface tennis courts.

Benton Township Elementary School, located in the village of Fleetville, was constructed in 1930. It contains seven regular classrooms, a library, gymnasium-auditorium, cafeteria kitchen, a health room and an office-conference room.

Dalton Elementary School, also built in 1930, contains seven classrooms, an office, cafeteria, kitchen, health room, gymnasium-auditorium, and group instruction rooms. It was enlarged with the building of an addition in 1958.

Factoryville Elementary School, built in 1906, was expanded by additions in 1922 and 1952. It contains six classrooms, a kindergarten room, gymnasium-auditorium, cafeteria, kitchen, health room, an office and a conference room.

Nicholson Elementary School, erected in 1920, was expanded by the addition of two wings in 1931. It contains 11 classrooms, cafeteria, kitchen, an office, teachers conference room, gymnasium-auditorium and a special education room.



FACTORYVILLE ELEMENTARY SCHOOL